



CON • TAC

QUALITY
**outdoor
hunting
combat**
APPAREL & GEAR

**PRODUCT
CATALOGUE
2023**

**TACTICAL/
ADVENTURE
RANGE**

Con-Tac Apparel and Gear manufactures a range of Outdoor, Hunting, Tactical/Adventure, and Corporate clothing. Made in Africa to withstand the harsh African elements.

Our products are locally manufactured in our own factory, and we support local trade as far as possible, giving us the advantage of continuous supply and availability throughout seasonal changes and high demand.

Every item is designed with comfort, quality and durability in mind, clothing you with confidence and courage to tackle your next adventure, hunt or board meeting with credence.

The camouflage patterns have been developed and field-tested by industry leaders, including former members of prestigious Specialised Units.

The **Tactical/Adventure Range** is designed as a tough and comfortable approach for farmers, adventures, outdoor lovers and city slickers that are wild at heart. **Clothing your EXPERIENCE.**

The **Hunter Range** is developed and manufactured in a relaxed, yet comfortable fit, giving you the edge to focus on your prey. **Clothing your QUEST.**

The **Corporate Range** is stylish and comfortable. Clothe every member of your company in high quality and style, creating unity and a sense of belonging. **Clothing your PROFESSIONALISM.**



**WHEREVER YOU GO
WE GO WITH YOU.**

TABLE OF CONTENTS

TACTICAL/ADVENTURE RANGE

Men's Tactical/Adventure Trousers	1
Men's Tactical/Adventure Shorts	2
Men's Karoo Shirt - Long Sleeve (Regular fit)	3
Men's Karoo Shirt - Short Sleeve (Regular fit)	4
Men's Karoo Shirt - Long Sleeve (Loose fit)	5
Men's Karoo Shirt - Short Sleeve (Loose fit)	6
Men's Tactical Shirt - Long Sleeve	7
Men's Tactical Shirt - Short Sleeve	8
Men's Tactical Jumpsuit	9
Ladies Tactical/Adventure Pants	10
Ladies Tactical/Adventure Shorts	11
Ladies Karoo Shirt - Long Sleeve	12
Ladies Karoo Shirt - Short Sleeve	13
Ladies Tactical Shirt - Long Sleeve	14
Ladies Tactical Shirt - Short Sleeve	15



MTT

Men's Tactical/ Adventure Trousers

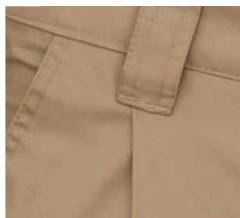
Available in Trousers & Shorts

Available in 3 Plain Colours

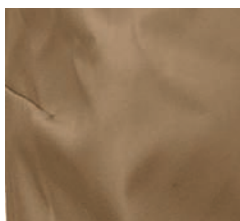
Manufacturer: Con-Tac Apparel and Gear



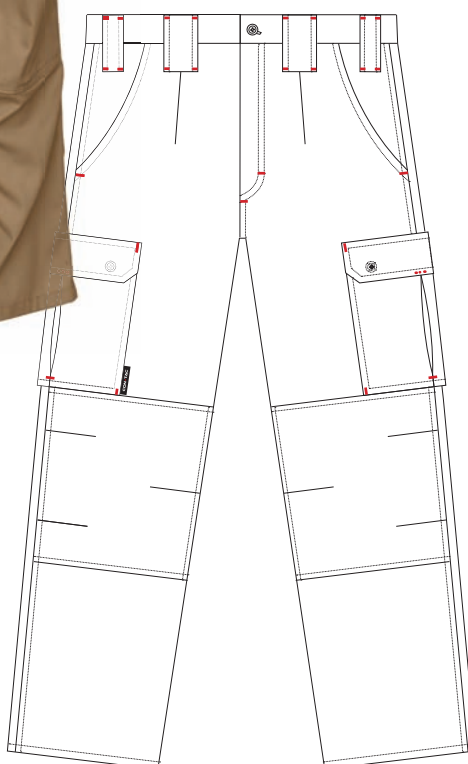
FEATURES



Double stitched construction and Individual bar tack reinforcements on all stress-points.



Articulated knees for comfort and ease of movement.



FEATURES

- Manufactured from Poly/Cotton Twill.
- Comfortable yet tough with high abrasive resistance and excellent colour integrity.
- Quick dry and wash-and-wear abilities.
- Double stitched construction for extra strength and improved quality.
- Individual bar tack reinforcements on all stress points adds to durability (indicated in red on technical drawing).
- 80's Poly.Poly thread for extra strength and durability.
- Additional articulation built into knees for comfort and ease of movement.
- Double knees and bum for additional durability.
- Elasticated waist for comfort.
- Two cargo pockets for additional storage space.
- Hardened polyester resin buttons do not heat or reflect in the sun, and a 4-hole cross stitch offers extra strength.
- YKK zips are used for quality and durability.
- Available colours: Stone, Oak, Black.

COLOURS



Con-Tac Stone (PC Twill)
(non camouflage - non aggressive
hospitality / security).



Con-Tac Khaki (PC Twill)
(non camouflage - non aggressive
hospitality / security).



Con-Tac Black (PC Twill)
(non camouflage - non aggressive
hospitality / security).

Uniforms & Footwear by
www.con-tac.co.za
deon@con-tac.co.za



MTS

Men's Tactical/ Adventure Shorts

Available in Trousers & Shorts

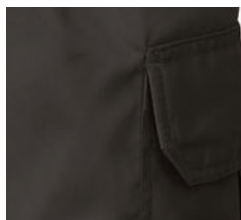
Available in 3 Plain Colours

Manufacturer: Con-Tac Apparel and Gear

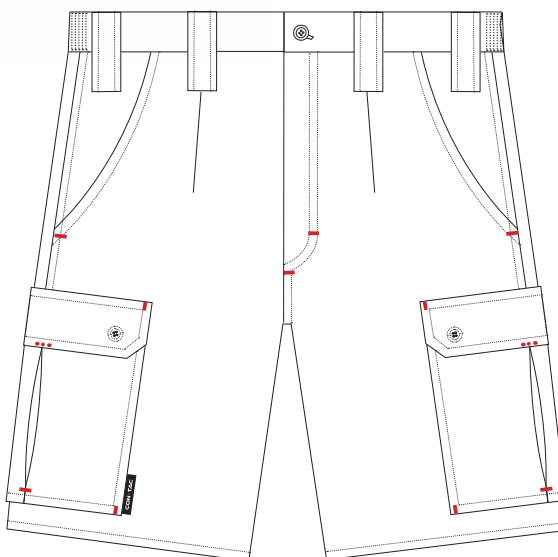
FEATURES



Double stitched construction and individual bar tack reinforcements on all stress-points.



Hidden buttons on pocket covers.



FEATURES

- Manufactured from Poly/Cotton Twill.
 - Comfortable yet tough with high abrasive resistance and excellent colour integrity.
 - Quick dry and wash-and-wear abilities.
 - Double stitched construction for extra strength and improved quality.
 - Individual bar tack reinforcements on all stress points adds to durability (indicated in red on technical drawing).
 - 80's Poly.Poly thread for extra strength and durability.
 - Double bum for additional durability.
 - Elasticated waist for comfort.
 - Two cargo pockets for additional storage space.
 - Hardened polyester resin buttons do not heat or reflect in the sun, and a 4-hole cross stitch offers extra strength.
 - YKK zips are used for quality and durability.
- Available colours: Stone, Oak, Black.

COLOURS



Con-Tac Stone (PC Twill)
(non camouflage - non aggressive
hospitality / security).



Con-Tac Khaki (PC Twill)
(non camouflage - non aggressive
hospitality / security).



Con-Tac Black (PC Twill)
(non camouflage - non aggressive
hospitality / security).

Uniforms & Footwear by
www.con-tac.co.za
deon@con-tac.co.za



MKS-LR

Men's Karoo Shirt - Long Sleeve (Regular Fit)

Available in long and short sleeves

Available in 7 Plain Colours

Manufacturer: Con-Tac Apparel and Gear

FEATURES



Double stitched construction and Individual bar tack reinforcements on all stress-points.



Hidden buttons on pocket covers.



COLOURS

Stone (PC Twill)

Khaki (PC Twill)

Bamboo (PC Twill)

Olive (PC Twill)

Tobacco (PC Twill)

Navy (PC Twill)

Black (PC Twill)

FEATURES

- **Regular fit** - provides comfort for the slim, regular build adventurer.
- Manufactured from Poly/Cotton Twill.
- Comfortable yet tough with high abrasive resistance and excellent colour integrity.
- Quick dry and wash-and-wear abilities.
- Double stitched construction for extra strength and improved quality.
- Individual bar tack reinforcements on all stress points adds to durability (indicated in red on technical drawing).
- 80's Poly.Poly thread for extra strength and durability.
- A vent across the back gives extra ventilation and keeps you cool.
- Hardened polyester resin buttons do not heat or reflect in the sun, and a 4-hole cross stitch offers extra strength.
- Two spare buttons are provided on the bottom of the inner right-hand seam.
- Available colours: Stone, Khaki, Bamboo, Olive, Tobacco, Navy, Black.

Uniforms & Footwear by
www.con-tac.co.za
deon@con-tac.co.za



MKS-SR

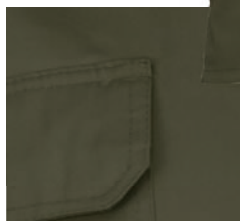
Men's Karoo Shirt - Short Sleeve (Regular Fit)

Available in long and short sleeves

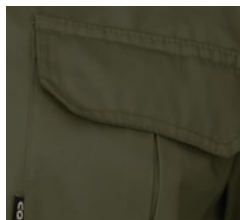
Available in 7 Plain Colours

Manufacturer: Con-Tac Apparel and Gear

FEATURES



Double stitched construction and Individual bar tack reinforcements on all stress-points.



Hidden buttons on pocket covers.



COLOURS

Stone (PC Twill)

Khaki (PC Twill)

Bamboo (PC Twill)

Olive (PC Twill)

Tobacco (PC Twill)

Navy (PC Twill)

Black (PC Twill)

FEATURES

- **Regular fit** - provides comfort for the slim, regular build adventurer.
 - Manufactured from Poly/Cotton Twill.
 - Comfortable yet tough with high abrasive resistance and excellent colour integrity.
 - Quick dry and wash-and-wear abilities.
 - Double stitched construction for extra strength and improved quality.
 - Individual bar tack reinforcements on all stress points adds to durability (indicated in red on technical drawing).
 - 80's Poly.Poly thread for extra strength and durability.
 - A vent across the back gives extra ventilation and keeps you cool.
 - Hardened polyester resin buttons do not heat or reflect in the sun, and a 4-hole cross stitch offers extra strength.
 - Two spare buttons are provided on the bottom of the inner right-hand seam.
- Available colours: Stone, Khaki, Bamboo, Olive, Tobacco, Navy, Black.

Uniforms & Footwear by
www.con-tac.co.za
deon@con-tac.co.za



MKS-LL

Men's Karoo Shirt - Long Sleeve (Loose Fit)

Available in long and short sleeves

Available in 7 Plain Colours

Manufacturer: Con-Tac Apparel and Gear



FEATURES



Double stitched construction and Individual bar tack reinforcements on all stress-points.



Hidden buttons on pocket covers.



COLOURS

Stone (PC Twill)

Khaki (PC Twill)

Bamboo (PC Twill)

Olive (PC Twill)

Tobacco (PC Twill)

Navy (PC Twill)

Black (PC Twill)

FEATURES

- **Loose fit** – extra space with longer cut that provides comfort for the bigger, well-rounded adventurer.
 - Manufactured from Poly/Cotton Twill.
 - Comfortable yet tough with high abrasive resistance and excellent colour integrity.
 - Quick dry and wash-and-wear abilities.
 - Double stitched construction for extra strength and improved quality.
 - Individual bar tack reinforcements on all stress points adds to durability (indicated in red on technical drawing).
 - 80's Poly.Poly thread for extra strength and durability.
 - A vent across the back gives extra ventilation and keeps you cool.
 - Hardened polyester resin buttons do not heat or reflect in the sun, and a 4-hole cross stitch offers extra strength.
 - Two spare buttons are provided on the bottom of the inner right-hand seam.
- Available colours: Stone, Khaki, Bamboo, Olive, Tobacco, Navy, Black

Uniforms & Footwear by
www.con-tac.co.za
deon@con-tac.co.za



MKS-SL

Men's Karoo Shirt - Short Sleeve (Loose Fit)

Available in long and short sleeves

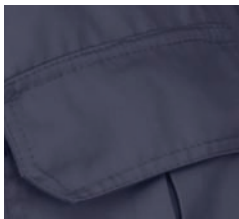
Available in 7 Plain Colours

Manufacturer: Con-Tac Apparel and Gear

FEATURES



Double stitched construction and Individual bar tack reinforcements on all stress-points.



Hidden buttons on pocket covers.



COLOURS

Stone (PC Twill)

Khaki (PC Twill)

Bamboo (PC Twill)

Olive (PC Twill)

Tobacco (PC Twill)

Navy (PC Twill)

Black (PC Twill)

FEATURES

- **Loose fit** – extra space with longer cut that provides comfort for the bigger, well-rounded adventurer.
- Manufactured from Poly/Cotton Twill.
- Comfortable yet tough with high abrasive resistance and excellent colour integrity.
- Quick dry and wash-and-wear abilities.
- Double stitched construction for extra strength and improved quality.
- Individual bar tack reinforcements on all stress points adds to durability (indicated in red on technical drawing).
- 80's Poly.Poly thread for extra strength and durability.
- A vent across the back gives extra ventilation and keeps you cool.
- Hardened polyester resin buttons do not heat or reflect in the sun, and a 4-hole cross stitch offers extra strength.
- Two spare buttons are provided on the bottom of the inner right-hand seam.
- Available colours: Stone, Khaki, Bamboo, Olive, Tobacco, Navy, Black.

Uniforms & Footwear by
www.con-tac.co.za
deon@con-tac.co.za



MTS-LS

Men's Tactical Shirt - Long Sleeve

Available in Long Sleeve & Short Sleeve

Available in Camouflage and 3 Plain Colours
Other colour combinations available on request on bulk orders

Manufacturer: Con-Tac Apparel and Gear

FEATURES



Double stitched construction and Individual bar tack reinforcements for improved quality & durability.

COLOURS



Con-Tac Richtersveld camo
(grassland/arid landscape).



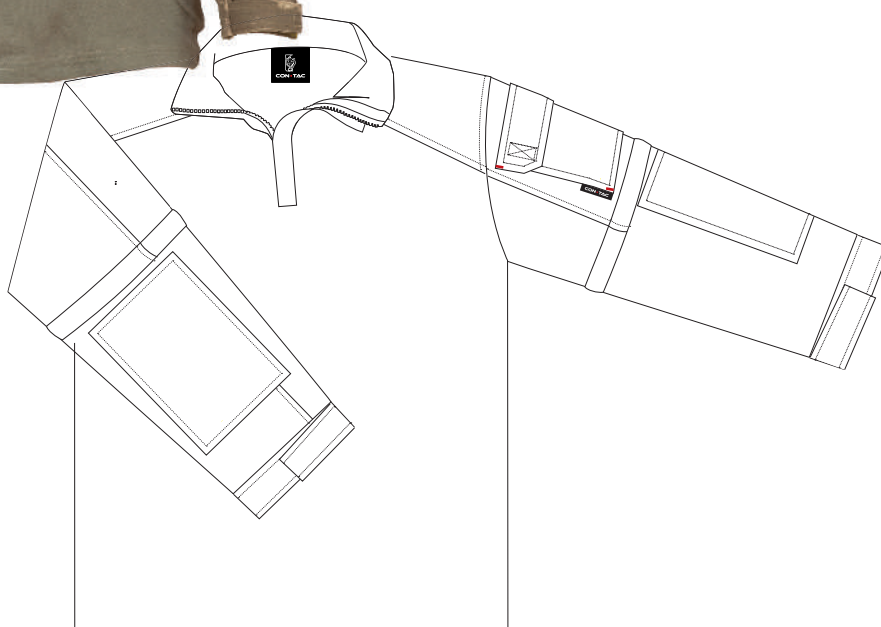
Con-Tac Khaki (PC Twill)
(non camouflage - non aggressive hospitality / security).



Con-Tac Green (PC Twill)
(non camouflage - non aggressive hospitality / security).



Con-Tac Black (PC Twill)
(non camouflage - non aggressive hospitality / security).



FEATURES

- Ideal garment to be worn under body armour and for tactical operations where serious movability with comfort is needed.
 - Can be worn under a jacket as part of a layer system where additional warmth is needed.
 - Also great for hunting, airsoft, paintball, shooting, army training, fishing, hiking, climbing, camping, travelling and cycling.
 - Manufactured from Poly/Cotton Twill (arms) and 100% cotton (torso).
 - Comfortable yet tough with high abrasive resistance and excellent colour integrity.
 - Quick dry and wash-and-wear abilities.
 - Double stitched construction for extra strength and improved quality.
 - Individual bar tack reinforcements on all stress points adds to durability (indicated in red on technical drawing).
 - 80's Poly.Poly thread for extra strength and durability.
 - Double layers on the hard-wearing areas.
 - YKK zips are used for quality and durability.
- Available colours: Green torso and Richtersveld Camo sleeves.
Black torso and Black sleeves.

Footwear & Uniforms by
www.con-tac.co.za
deon@con-tac.co.za



MTS-SS

Men's Tactical Shirt - Short Sleeve

Available in Long Sleeve & Short Sleeve

Available in Camouflage and 3 Plain Colours
Other colour combinations available on request on bulk orders

Manufacturer: Con-Tac Apparel and Gear

FEATURES



Double stitched construction and Individual bar tack reinforcements for improved quality & durability.

COLOURS



Con-Tac Richtersveld camo
(grassland/arid landscape).



Con-Tac Khaki (PC Twill)
(non camouflage - non aggressive hospitality / security).



Con-Tac Green (PC Twill)
(non camouflage - non aggressive hospitality / security).



Con-Tac Black (PC Twill)
(non camouflage - non aggressive hospitality / security).



FEATURES

- Ideal garment to be worn under body armour and for tactical operations where serious movability with comfort is needed.
 - Can be worn under a jacket as part of a layer system where additional warmth is needed.
 - Also great for hunting, airsoft, paintball, shooting, army training, fishing, hiking, climbing, camping, travelling and cycling.
 - Manufactured from Poly/Cotton Twill (arms) and 100% cotton (torso).
 - Comfortable yet tough with high abrasive resistance and excellent colour integrity.
 - Quick dry and wash-and-wear abilities.
 - Double stitched construction for extra strength and improved quality.
 - Individual bar tack reinforcements on all stress points adds to durability (indicated in red on technical drawing).
 - 80's Poly.Poly thread for extra strength and durability.
 - Double layers on the hard-wearing areas.
 - YKK zips are used for quality and durability.
- Available colours: Green torso and Richtersveld Camo sleeves.
Black torso and Black sleeves.

Footwear & Uniforms by
www.con-tac.co.za
deon@con-tac.co.za



MTJ

Men's Tactical Jumpsuit

Available as long sleeve & long pants only

Available in 2 Plain Colours & Camo

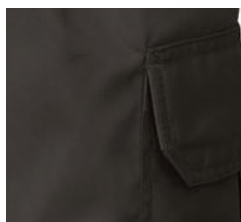
Manufacturer: Con-Tac Apparel and Gear



FEATURES

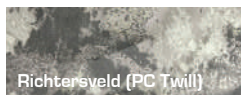


Double stitched construction and Individual bar tack reinforcement on all stress-points.

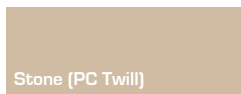


Hidden buttons on pocket covers.

COLOURS



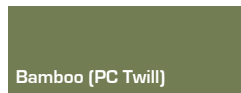
Richtersveld (PC Twill)



Stone (PC Twill)



Khaki (PC Twill)



Bamboo (PC Twill)



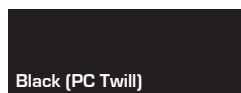
Olive (PC Twill)



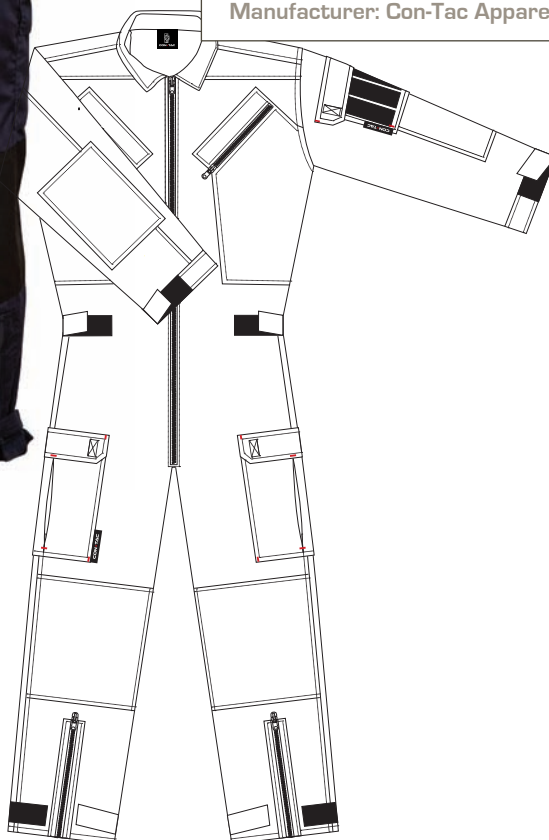
Tobacco (PC Twill)



Navy (PC Twill)



Black (PC Twill)



FEATURES

- Manufactured from Poly/Cotton Twill.
- Comfortable yet tough with high abrasive resistance and excellent colour integrity.
- Quick dry and wash-and-wear abilities.
- Double stitched construction for extra strength and improved quality.
- Individual bar tack reinforcements on all stress points adds to durability (indicated in red on technical drawing).
- 80's Poly.Poly thread for extra strength and durability.
- Loose fit and longer cut on the torso part provides for more movement space and comfort.
- Elasticated back and waist adjuster tabs ensuring comfort and better fit.
- Chest pockets with zips for quick access.
- Pocket on left arm with Velcro closing tab.
- Two cargo pockets for additional storage space.
- Double layers on the hard-wearing areas.
- YKK zips are used for quality and durability.
- (Zips can be replaced with buttons on request and order size)
- Hardened polyester resin buttons do not heat or reflect in the sun, and a 4-hole cross stitch offers extra strength.
- Available colours: Richtersveld, Stone, Khaki, Bamboo, Olive, Tobacco, Navy, Black.



LTP

Ladies Tactical/ Adventure Pants

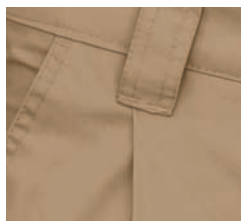
Available in long pants and shorts

Available in 3 Plain Colours

Manufacturer: Con-Tac Apparel and Gear



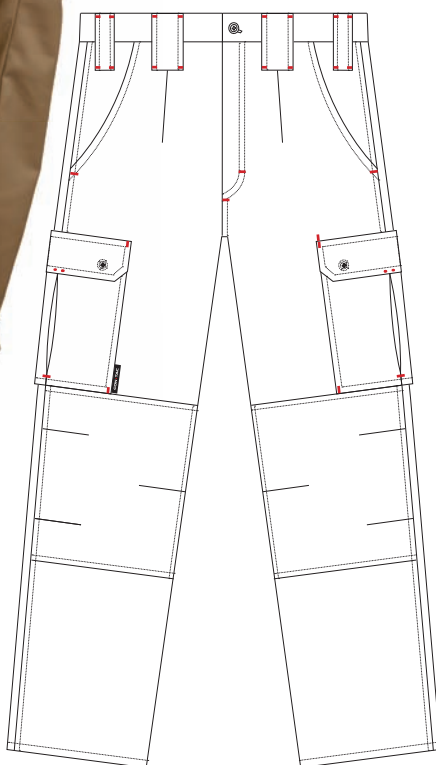
FEATURES



Double stitched construction and individual bar tack reinforcements on all stress-points.



Articulated knees for comfort and ease of movement.



FEATURES

- Manufactured from Poly/Cotton Twill.
- Comfortable yet tough with high abrasive resistance and excellent colour integrity.
- Quick dry and wash-and-wear abilities.
- Double stitched construction for extra strength and improved quality.
- Individual bar tack reinforcements on all stress points adds to durability (indicated in red on technical drawing).
- Additional articulation built into knees for comfort and ease of movement.
- Double knees and bum for additional durability.
- Elasticated waist for comfort.
- Two cargo pockets for additional storage space.
- Hardened polyester resin buttons do not heat or reflect in the sun, and a 4-hole cross stitch offers extra strength.
- YKK zips are used for quality and durability.
- Available colours: Stone, Oak, Black.

COLOURS



Con-Tac Stone (PC Twill)
(non camouflage - non aggressive
hospitality / security).



Con-Tac Khaki (PC Twill)
(non camouflage - non aggressive
hospitality / security).



Con-Tac Black (PC Twill)
(non camouflage - non aggressive
hospitality / security).

Uniforms & Footwear by
www.con-tac.co.za
deon@con-tac.co.za



LTS

Ladies Tactical/ Adventure Shorts

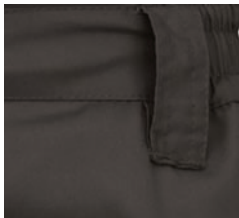
Available in long pants and shorts

Available in 3 Plain Colours

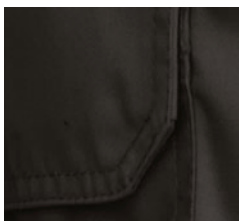
Manufacturer: Con-Tac Apparel and Gear



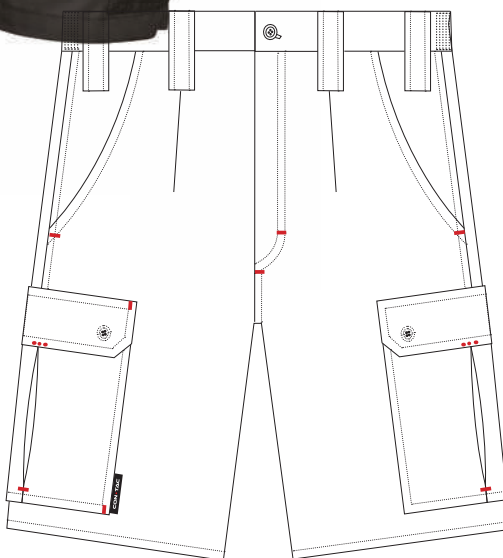
FEATURES



Double stitched construction and individual bar tack reinforcements on all stress-points.



Hidden buttons on pocket covers.



COLOURS



Con-Tac Stone (PC Twill)
(non camouflage - non aggressive
hospitality / security).



Con-Tac Khaki (PC Twill)
(non camouflage - non aggressive
hospitality / security).



Con-Tac Black (PC Twill)
(non camouflage - non aggressive
hospitality / security).

FEATURES

- Manufactured from Poly/Cotton Twill.
- Comfortable yet tough with high abrasive resistance and excellent colour integrity.
- Quick dry and wash-and-wear abilities.
- Double stitched construction for extra strength and improved quality.
- Individual bar tack reinforcements on all stress points adds to durability (indicated in red on technical drawing).
- 80's Poly.Poly thread for extra strength and durability.
- Double bum for additional durability.
- Elasticated waist for comfort.
- Two cargo pockets for additional storage space.
- Hardened polyester resin buttons do not heat or reflect in the sun, and a 4-hole cross stitch offers extra strength.
- YKK zips are used for quality and durability.
- Available colours: Stone, Oak, Black.

Uniforms & Footwear by
www.con-tac.co.za
deon@con-tac.co.za



LKS-LS

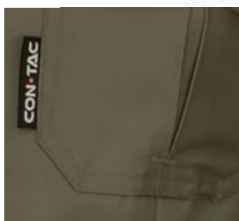
Ladies Karoo Shirt - Long Sleeve

Available in long and short sleeves

Available in 7 Plain Colours

Manufacturer: Con-Tac Apparel and Gear

FEATURES



Double stitched construction and Individual bar tack reinforcements on all stress-points.



Hidden buttons on pocket covers.



COLOURS

Stone (PC Twill)

Khaki (PC Twill)

Bamboo (PC Twill)

Olive (PC Twill)

Tobacco (PC Twill)

Navy (PC Twill)

Black (PC Twill)

FEATURES

- Manufactured from Poly/Cotton Twill.
- Comfortable yet tough with high abrasive resistance and excellent colour integrity.
- Quick dry and wash-and-wear abilities.
- Double stitched construction for extra strength and improved quality.
- Individual bar tack reinforcements on all stress points adds to durability (indicated in red on technical drawing).
- 80's Poly.Poly thread for extra strength and durability.
- A vent across the back gives extra ventilation and keeps you cool.
- Curved around the ladies' body allows for a stylish and classy look while proving a comfortable fit.
- Hardened polyester resin buttons do not heat or reflect in the sun, and a 4-hole cross stitch offers extra strength.
- Two spare buttons are provided on the bottom of the inner right-hand seam.
- Available colours: Stone, Khaki, Bamboo, Olive, Tobacco, Navy, Black.

Uniforms & Footwear by
www.con-tac.co.za
deon@con-tac.co.za



LKS-SS

Ladies Karoo Shirt - Short Sleeve

Available in long and short sleeves

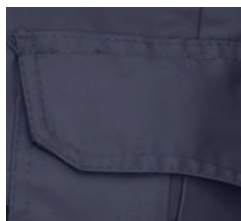
Available in 7 Plain Colours

Manufacturer: Con-Tac Apparel and Gear

FEATURES



Double stitched construction and Individual bar tack reinforcements on all stress-points.



Hidden buttons on pocket covers.



COLOURS

Stone (PC Twill)

Khaki (PC Twill)

Bamboo (PC Twill)

Olive (PC Twill)

Tobacco (PC Twill)

Navy (PC Twill)

Black (PC Twill)

FEATURES

- Manufactured from Poly/Cotton Twill.
- Comfortable yet tough with high abrasive resistance and excellent colour integrity.
- Quick dry and wash-and-wear abilities.
- Double stitched construction for extra strength and improved quality.
- Individual bar tack reinforcements on all stress points adds to durability (indicated in red on technical drawing).
- 80's Poly.Poly thread for extra strength and durability.
- A vent across the back gives extra ventilation and keeps you cool.
- Curved around the ladies' body allows for a stylish and classy look while proving a comfortable fit.
- Hardened polyester resin buttons do not heat or reflect in the sun, and a 4-hole cross stitch offers extra strength.
- Two spare buttons are provided on the bottom of the inner right-hand seam.
- Available colours: Stone, Khaki, Bamboo, Olive, Tobacco, Navy, Black.

Uniforms & Footwear by
www.con-tac.co.za
deon@con-tac.co.za



LTS-LS

Ladies Tactical Shirt - Long Sleeve

Available in Long Sleeve & Short Sleeve

Available in Camouflage and 3 Plain Colours
Other colour combinations available on request on bulk orders

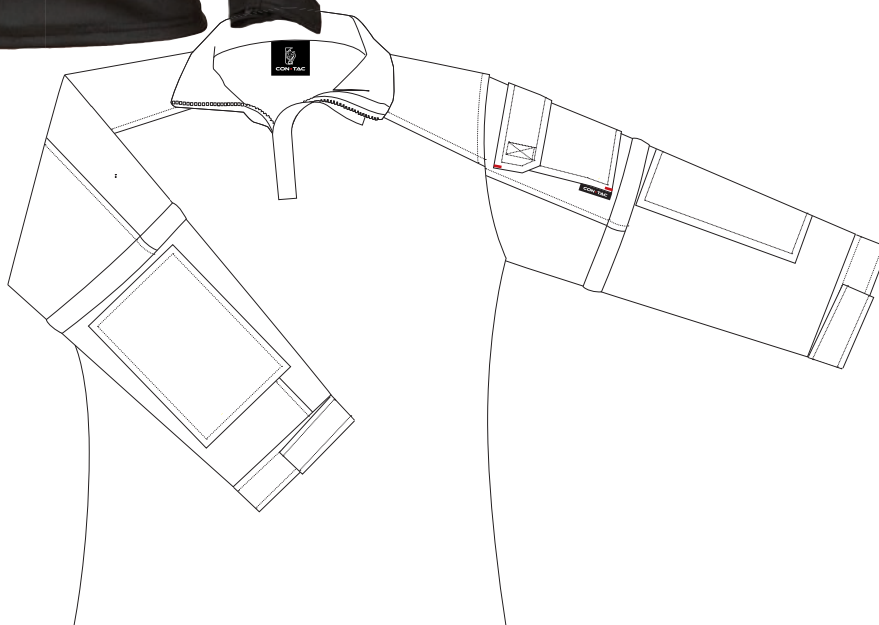
Manufacturer: Con-Tac Apparel and Gear

FEATURES



Double stitched construction and Individual bar tack reinforcements for improved quality & durability.

COLOURS

Con-Tac Richtersveld camo
(grassland/arid landscape).Con-Tac Khaki (PC Twill)
(non camouflage - non aggressive hospitality / security).Con-Tac Green (PC Twill)
(non camouflage - non aggressive hospitality / security).Con-Tac Black (PC Twill)
(non camouflage - non aggressive hospitality / security).

TECHNICAL FEATURES

- Ideal garment to be worn under body armour and for tactical operations where serious movability with comfort is needed.
 - Can be worn under a jacket as part of a layer system where additional warmth is needed.
 - Also great for hunting, airsoft, paintball, shooting, army training, fishing, hiking, climbing, camping, travelling and cycling.
 - Manufactured from Poly/Cotton Twill (arms) and 100% cotton (torso).
 - Comfortable yet tough with high abrasive resistance and excellent colour integrity.
 - Quick dry and wash-and-wear abilities.
 - Double stitched construction for extra strength and improved quality.
 - Individual bar tack reinforcements on all stress points adds to durability (indicated in red on technical drawing).
 - 80's Poly.Poly thread for extra strength and durability.
 - Double layers on the hard-wearing areas.
 - YKK zips are used for quality and durability.
- Available colours: Green torso and Richtersveld Camo sleeves.
Black torso and Black sleeves.

Footwear & Uniforms by
www.con-tac.co.za
deon@con-tac.co.za



LTS-SS

Ladies Tactical Shirt - Short Sleeve

Available in Long Sleeve & Short Sleeve

Available in Camouflage and 3 Plain Colours
Other colour combinations available on request on bulk orders

Manufacturer: Con-Tac Apparel and Gear

FEATURES



Double stitched construction and individual bar tack reinforcements for improved quality & durability.

COLOURS



Con-Tac Richtersveld camo (grassland/arid landscape).



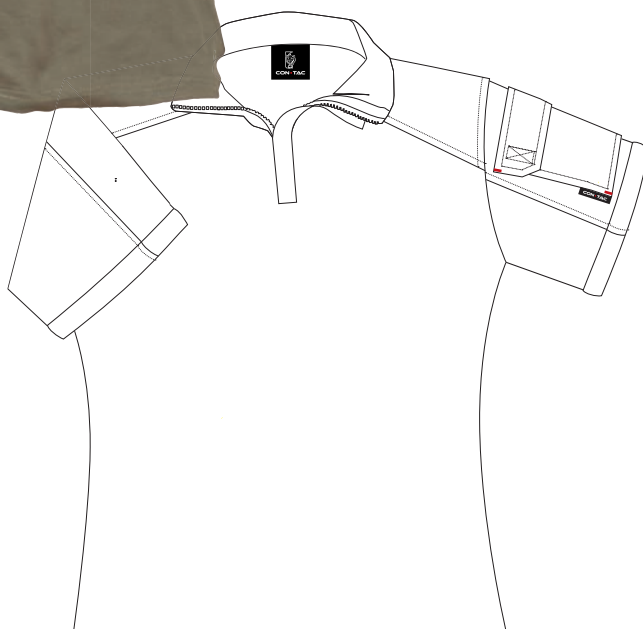
Con-Tac Khaki (PC Twill) (non camouflage - non aggressive hospitality / security).



Con-Tac Green (PC Twill) (non camouflage - non aggressive hospitality / security).



Con-Tac Black (PC Twill) (non camouflage - non aggressive hospitality / security).



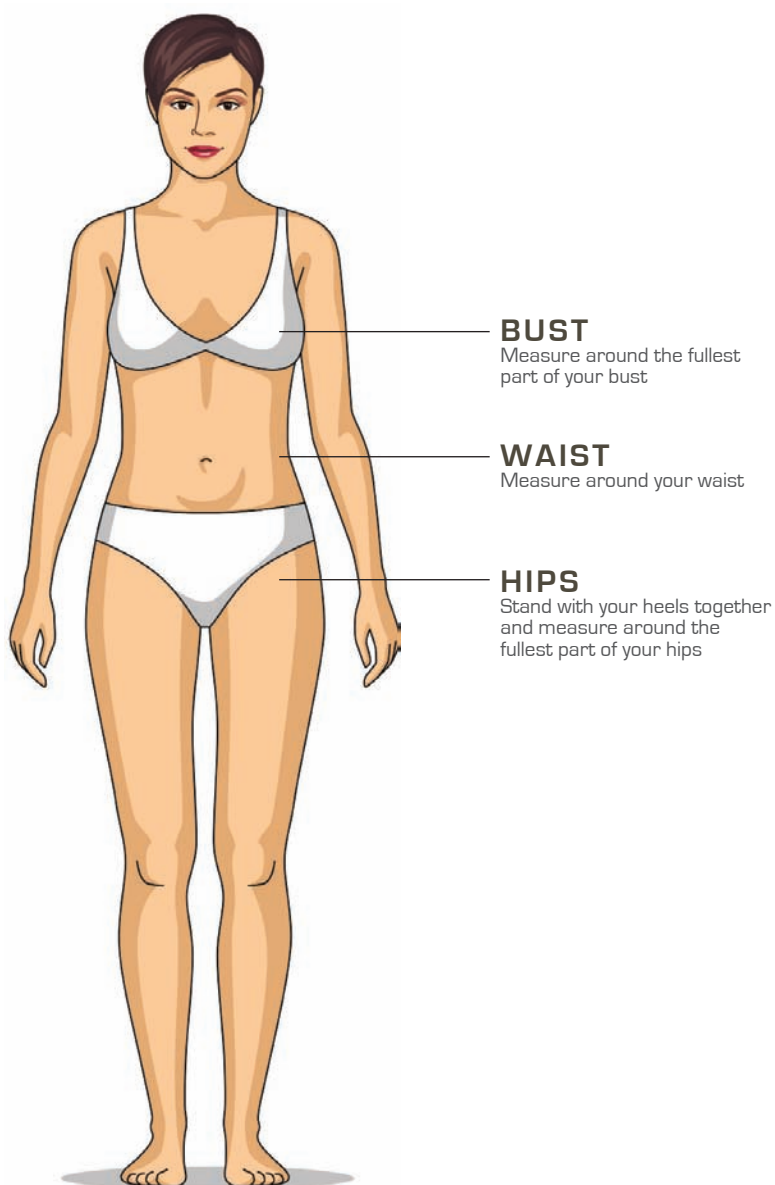
FEATURES

- Ideal garment to be worn under body armour and for tactical operations where serious movability with comfort is needed.
 - Can be worn under a jacket as part of a layer system where additional warmth is needed.
 - Also great for hunting, airsoft, paintball, shooting, army training, fishing, hiking, climbing, camping, travelling and cycling.
 - Manufactured from Poly/Cotton Twill (arms) and 100% cotton (torso).
 - Comfortable yet tough with high abrasive resistance and excellent colour integrity.
 - Quick dry and wash-and-wear abilities.
 - Double stitched construction for extra strength and improved quality.
 - Individual bar tack reinforcements on all stress points adds to durability (indicated in red on technical drawing).
 - 80's Poly.Poly thread for extra strength and durability.
 - Double layers on the hard-wearing areas.
 - YKK zips are used for quality and durability.
- Available colours: Green torso and Richtersveld Camo sleeves.
Black torso and Black sleeves.

Footwear & Uniforms by
www.con-tac.co.za
deon@con-tac.co.za

Ladies shirts

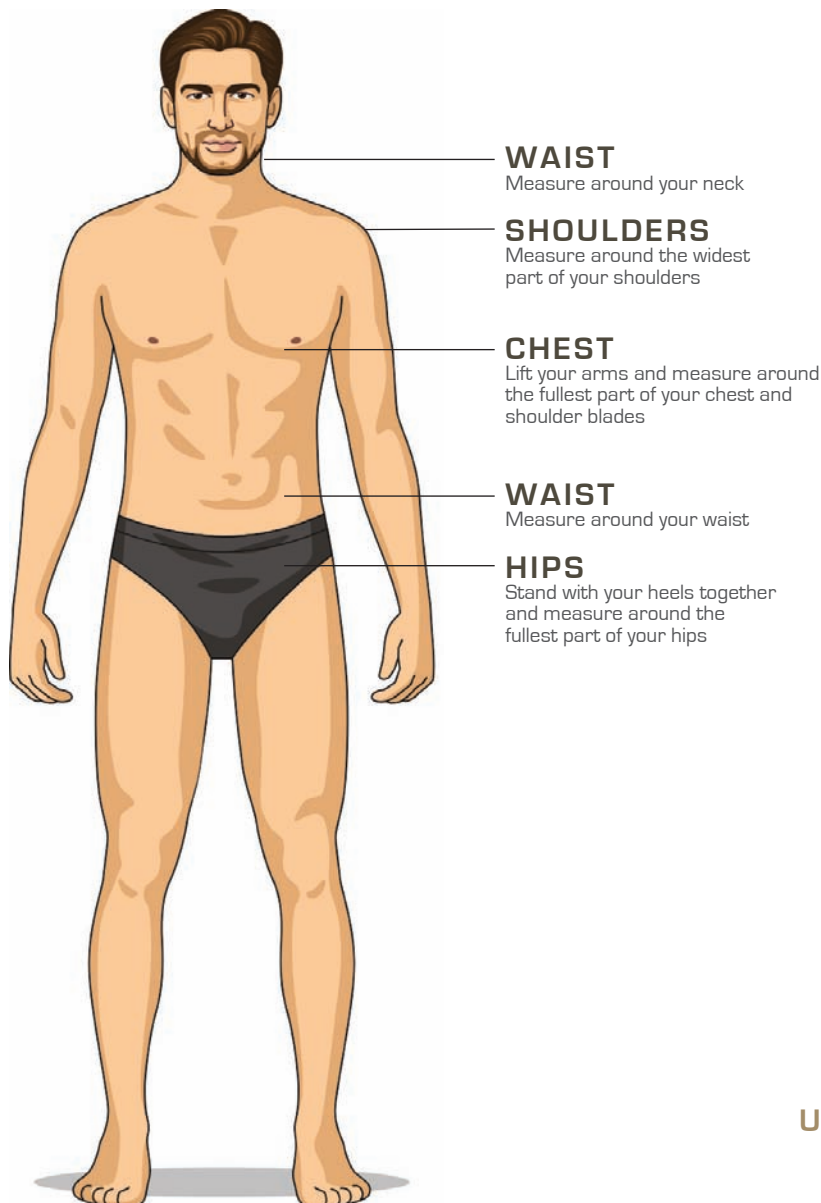
SIZE		XS	S	M	L	XL	2XL	3XL	4XL	5XL
Body measurements										
TO FIT BUST	cm	80	85	90	95	100	105	110	115	120
TO FIT BUST	inches	31.5	33.5	35.4	37.4	39.4	41.3	43.3	45.3	47.2
TO FIT WAIST	cm	63	68	73	78	83	88	93	98	103
TO FIT WAIST	inches	24.8	26.8	28.7	30.7	32.7	34.6	36.6	38.6	40.6
TO FIT HIP	cm	89	94	99	104	109	114	119	124	129
TO FIT HIP	inches	35.0	37.0	39.0	40.9	42.9	44.9	46.9	48.8	49.2
US		80	85	90	95	100	105	110	115	120
UK		31.5	33.5	35.4	37.4	39.4	41.3	43.3	45.3	47.2
LADIES ALPHA		XS	S	M	L	XL	2XL	3XL	4XL	5XL
LADIES NUMERIC		30	32	34	36	38	40	42	44	46
LADIES UK		6	8	10	12	14	16	18	20	22



Uniforms & Footwear by
www.con-tac.co.za
deon@con-tac.co.za

Men's shirts

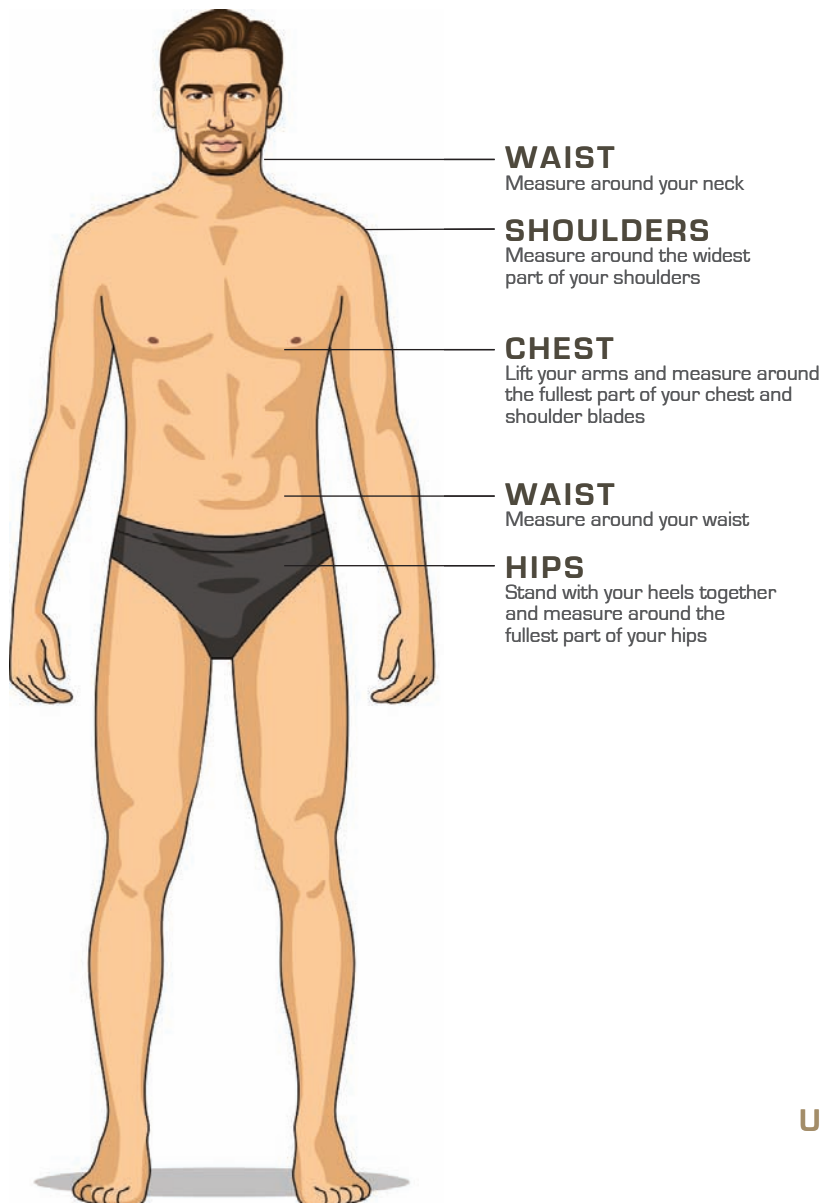
SIZE		XS	S	M	L	XL	2XL	3XL	4XL	5XL
Body measurements										
TO FIT BUST	cm	80	85	90	95	100	105	110	115	120
TO FIT BUST	inches	31.5	33.5	35.4	37.4	39.4	41.3	43.3	45.3	47.2
TO FIT WAIST	cm	63	68	73	78	83	88	93	98	103
TO FIT WAIST	inches	24.8	26.8	28.7	30.7	32.7	34.6	36.6	38.6	40.6
TO FIT HIP	cm	89	94	99	104	109	114	119	124	129
TO FIT HIP	inches	35.0	37.0	39.0	40.9	42.9	44.9	46.9	48.8	49.2
US		80	85	90	95	100	105	110	115	120
UK		31.5	33.5	35.4	37.4	39.4	41.3	43.3	45.3	47.2



Uniforms & Footwear by
www.con-tac.co.za
deon@con-tac.co.za

Jumpsuit sizes

SIZE		XS	S	M	L	XL	2XL	3XL	4XL	5XL
Body measurements										
JACKET SIZES	inches	36	38	40	42	44	46	48	50	52
TO FIT CHEST	cm	92	97	102	107	112	117	122	127	132
TROUSER SIZE	inches	32	34	36	38	40	42	44	46	48
TO FIT WAIST	cm	82	87	92	97	102	107	112	117	122



Uniforms & Footwear by
www.con-tac.co.za
deon@con-tac.co.za



CON • TAC

QUALITY
**outdoor
hunting
combat**
APPAREL & GEAR

**WHEREVER YOU GO
WE GO WITH YOU.**

CRUISE SPEED 133

